

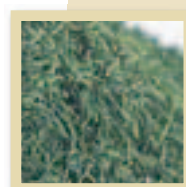
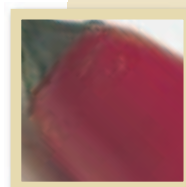
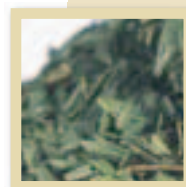
SOUPS



| SOUPS | | | |
|-------|----------------------------|---------|------------|
| Code: | Product: | A10 Tin | Pail 10Ltr |
| 8690 | Chicken Noodle Soup | 2kg | |
| 5370 | Chunky Tomato Soup | 2kg | |
| 5205 | Creamy Soup Base | 2kg | |
| 5380 | Crème Chicken Supreme Soup | 2kg | 7kg |
| 8600 | Crème Tomato Soup | 2kg | |
| 4030 | French Onion Soup | 2kg | 7kg |
| 8700 | Minestrone Soup | 2kg | |
| 7260 | Mushroom Soup | 2kg | |
| 6850 | Pea & Ham Soup | 2kg | |
| 8430 | Potato & Leek Soup | 2kg | |
| 8705 | Pumpkin Soup | 2kg | |
| 8685 | Rich Beef Soup | 2kg | |
| 5375 | Thick Vegetable Soup | 2kg | |
| 5365 | Tomato & Onion Soup | 2kg | |

| Pallet Configuration | | | |
|----------------------|-----------------|--------------|---------------|
| Packaging Type | Carton Quantity | Pallet Layer | Pallet Height |
| A10 Tin | 6 | 8 | 5 |
| 10Ltr Pail | 0 | 16 | 4 |

| Soups |
|---|
| Description |
| These powdered soup mixes are a convenient way to serve traditional flavours. Easy to prepare with minimal time and effort. |
| Directions and Recommended Usage |
| Mix approximately 100 grams of soup mix to 1 litre of water. Cook over medium heat, while stirring continuously. Bring to the boil and simmer for 3 minutes |



we give you the flavour
you be the Creator™